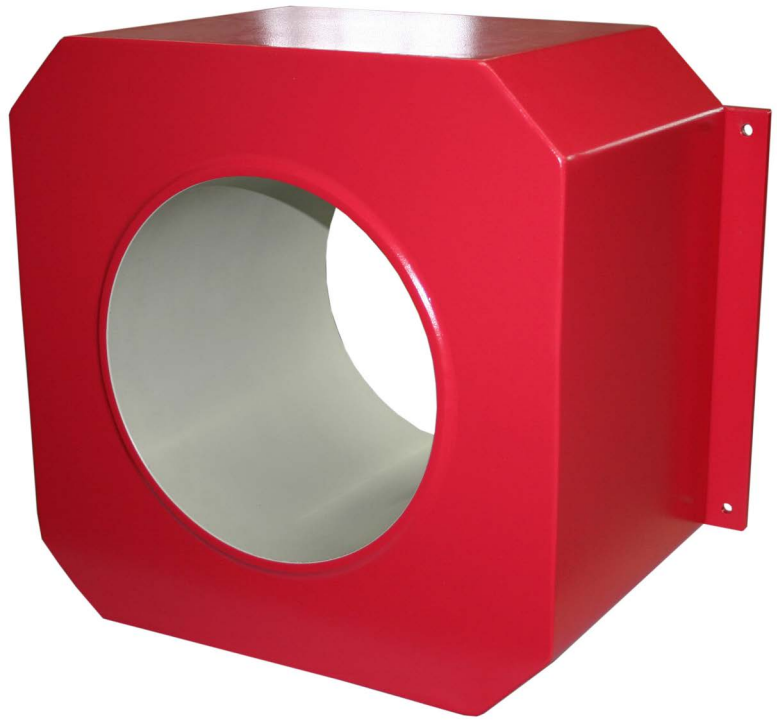


METRON 05 CR

Version 11/18

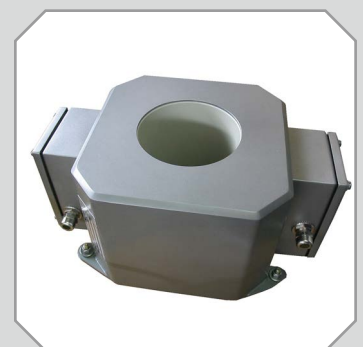
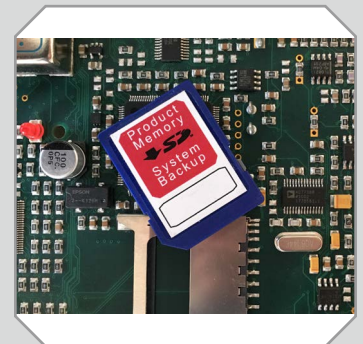


Metal detector for installation in pipe systems


- **Reliable** - in Process and Detection
- **Durable** - in Technology and Performance
- **Conforming** - in Design and Data management


In a few words:

- Digital signal processing for best detection
- Reliable and safe metal detection technology
- Process- and condition monitoring
- Failsafe storage of all system parameters
- Robust construction for maximum lifetime
- Maintenance free, long-term operation
- Size variations for different areas of use
- Password protected user management
- Network connectivity and data management



 **Mesutronic Gerätebau GmbH**

 Hackenfeld 13
94259 Kirchberg im Wald
Germany

 Phone: +49 9927 9410-0
Fax: +49 9927 1732

 E-Mail: sales@mesutronic.de
Web: www.mesutronic.de

MESUTRONIC
Metal Detection made in Germany